

## Manufacturer

GRUPA KON-PLAST Sp. z o.o.

Modła Królewska

ul. Kaliska 5

62-571 Stare Miasto

VAT No.: PL 665 298 78 92

POLAND



☎ 63 244 20 64

✉ [biuro@konplast.com.pl](mailto:biuro@konplast.com.pl)

🌐 [www.konplast.com.pl](http://www.konplast.com.pl)

# CATALOGUE

Logistic solutions



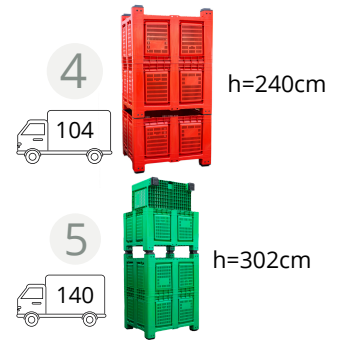
[WWW.KONPLAST.COM.PL](http://WWW.KONPLAST.COM.PL)



# BIG BOX Champion



- Perfect solution for storage and transport
- External dimensions **1200 x 1000 x 790mm**
- Internal dimensions **1120 x 920 x 630 mm**
- Capacity **680 L**
- Load capacity **500 kg**
- Material **HDPE** raw material, **approved for food contact**
- **Static load 4500 kg**
- High resistance to mechanical damage
- Resistance to UV radiation, low and high temperatures
- Possibility of placing a logo by engraving
- Adapted for use with forklifts, pallet truck and tilting devices



## walls

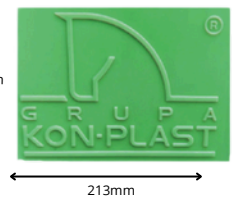
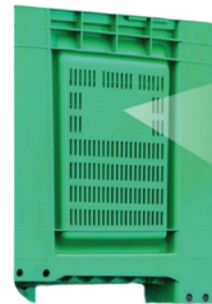


perforated walls



full walls

## marking



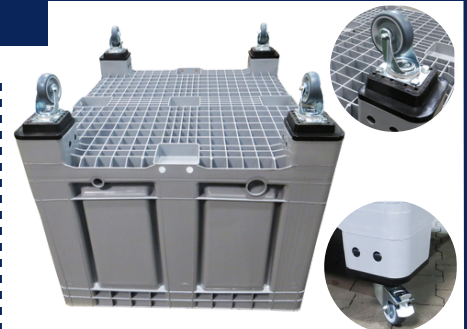
## base



3 skids



4 feet



4 wheels

## colours

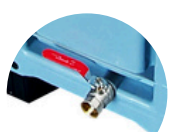
standard colours - green and grey  
other colours from RAL palette on request



## drain holes



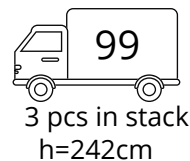
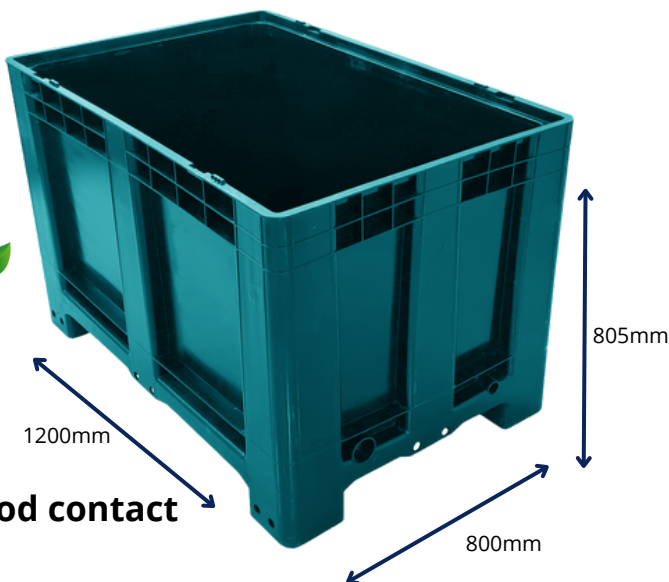
Ø 1 or 2 inch





# BIG BOX Champion junior

- Perfect solution for storage and transport
- External dimensions **1200 x 800 x 805mm**
- Internal dimensions **1125 x 725 x 610mm**
- Capacity **500 L**
- Material **HDPE** raw material, **approved for food contact**
- Full walls on skids or feet
- High resistance to mechanical damage
- Resistance to UV radiation, low and high temperatures
- Possibility of placing a logo by engraving
- Easy cleaning



# BIG BOX Foldable with 4 opening sides

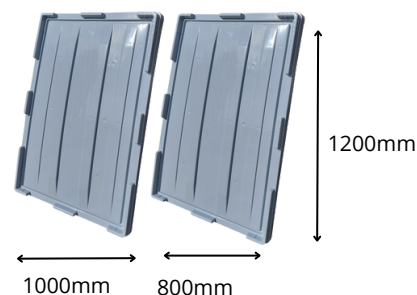
**NEW**

- 2 drop doors, 4 opening sides
- External dimensions **1200 x 1000 x 800mm**  
or **1200 x 800 x 800mm**
- Material **HDPE** raw material, **approved for food contact**
- Volume reduction after folding inwards
- Perfect solution for storage and transport
- High resistance to mechanical damage
- Resistance to UV radiation, low and high temperatures
- Possibility of placing a logo by engraving
- Easy cleaning

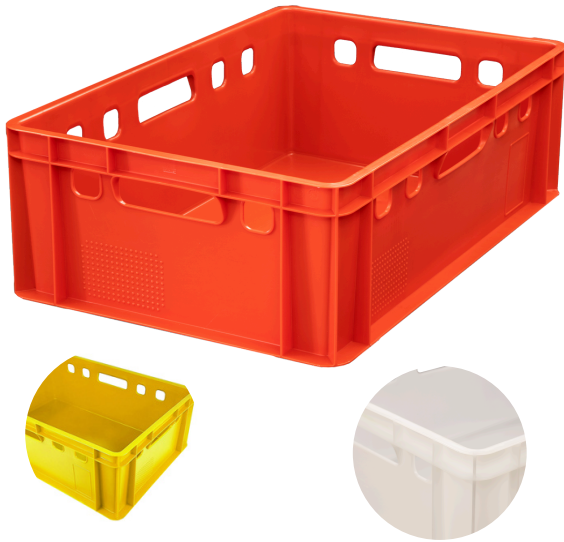


## Lids for Big Boxes

- Material HDPE approved for food contact
- High resistance to damage
- Standard colour - grey
- Other colours on request
- Dimensions  
**1200x1000mm**  
**1200x800mm**



## E2 container



- External dimensions **600 x 400 x 200mm**
- Internal dimensions **567 x 368 x 195mm**
- Capacity **40 L**
- Material **HDPE approved for food contact**
- Usage range: from -20 °C to +60 °C
- Possibility of marking using the engraving method
- Mostly used in meat industry
- Smooth walls eases cleaning
- Handles on 4 sides of the container
- Suitable for use on belt and roller conveyors

## Foldable crate



- External dimensions **600 x 400 x 219mm**
- Capacity **46 l**
- Load capacity **20 kg**
- Material **polypropylene (PP) approved for food contact**
- Possibility of marking using the engraving method
- Used for storage and transport of fruit and vegetables
- Ergonomic handles
- Safe ergo-locks clips
- Suitable for high loads in a stack
- Easy to clean
- Openwork surface ensures air circulation of fruit and vegetables
- Volume reduction after folding inwards

## Perforated crate



- External dimensions **500 x 300 x 250mm**
- Load capacity **13 kg**
- Material **polypropylene (PP) approved for food contact**
- Weight 0,69 kg
- Possibility of marking on short side
- Used for storage and transport
- Adapted to stack
- Openwork surface ensures air circulation
- Resistant to mechanical damage